

# **CONNECTing with SAS® Version 8: Virtually Transparent to the User**

**Lawrence Altmayer  
U.S. Census Bureau**



## **I. “Company XYZ” Application from SAS Institute course, “SAS/AF Software: Changes and Enhancements in Version 8”**

**A. How do we transfer the data sets to  
another platform?**

**B. How do we access them from a local  
session, using SAS/CONNECT?**

## **I. “Company XYZ” Application ...**

**C. How do we include SAS/CONNECT code for automatic remote session creation?  
...autoexec file**

**D. How do we automatically invoke application upon starting SAS session?**

- 1. Revise SAS configuration file.**
- 2. Change desktop SAS icon shortcut properties.**
- 3. Change properties of screen “Exit” pushbutton.**

## **II. “Bettabuys Supermarkets” Example, from Destiny course, “Using the FRAME Entry”**

**A. How do we transfer catalogs and data sets from version 6.12 to 8, using PROC COPY?**

**B. For direct access to application as with “Company XYZ” example, use same configuration file and desktop icon properties change idea.**

## “Company XYZ” Main Menu



## “Company XYZ” Mktgdata Screen

The screenshot shows a data entry screen for 'Company XYZ'. The window title is 'Company XYZ'. The main content area has a light gray background. At the top, there is a label 'Table: Mktgdata.detail' followed by a small icon. Below this is a table with the following data:

	Group	Product	Region	Territory	SalesRep	Date
1	PC	ACCS	Atlantic Coast	E2	BBF	01JUL96
2	PC	ACCS	Atlantic Coast	E1	JOS	01FEB97
3	PC	ACCS	Atlantic Coast	E2	GAE	01MAY96
4	PC	ACCS	Atlantic Coast	E2	GAE	01JUL96

Below the table, there is a 'Data Mode' section with two options: 'Browse' and 'Edit'. To the right of this section is a 'Close' button with a checkmark icon. The window has a standard Windows-style title bar and menu bar.

```
proc cport
  library=mktgdata
  file=
    'c:\temp\...\mktgdata.dat';
select detail grpsales monsales
qtrsales regiondrill
      regsales yearsales /
      memtype=data;
run;
```

**ftp session to copy transport file from pc  
to UNIX® machine:**

```
c:\TEMP\NFRA\mktg> ftp steps6
ftp> cd temp/nfra
ftp> pwd
ftp> binary
ftp> put mktgdata.dat
ftp> quit
```

```
libname mktgdata
    '/export/.../nfra';
filename tranfile
'/export/.../nfra/mktgdata.dat';
proc cimport
    library=mktgdata
infile=tranfile;
run;
```

```
options remote=steps6 comamid=tcp;
filename rlink
'c:\winnt\system32\tcpunix.scr';
libname mktgdata
'c:\temp\nfra\mktg';
```

```
signon;
rsubmit;
libname mktgdata
'/export/.../nfra';
proc upload inlib=mktgdata
outlib=mktgdata;
select detail grpsales monsales
qtrsales regiondrill
regsales yearsales
        /memptype=data;
run;
```

### **Autoexec File**

```
options noawsmenu;
libname co_xyz
'c:\temp\nfra\appl';
dm 'awsmaximize on';
options remote=steps6 comamid=tcp;
filename rlink
'c:\winnt\system32\tcpunix.scr';
```

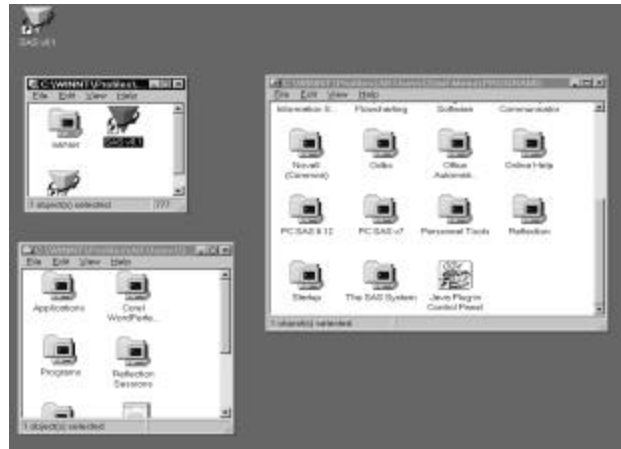
### **Autoexec File...**

```
signon;  
libname mktgdata  
'/export/.../mktgdata'  
server=steps6;  
libname servdata  
'/export/.../servdata'  
server=steps6;
```

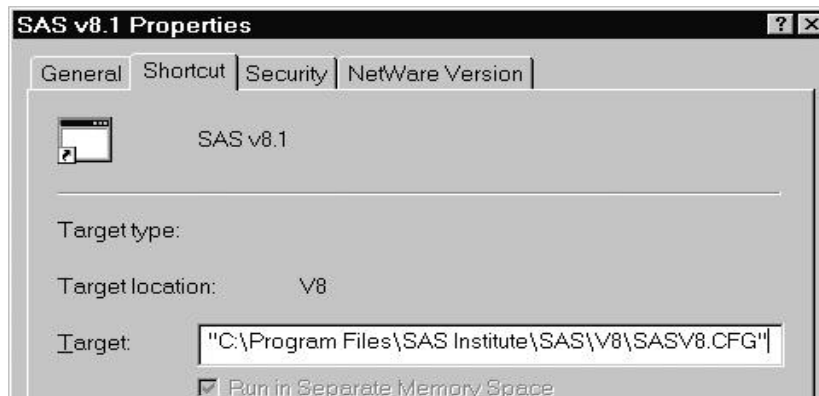
### **Configuration File**

```
-initcmd  
  "af c=co_xyz.appdev.mainmen.frame;  
zoom; toolclose; command close;"  
/* set default locations      */  
-fontsloc "!sasroot\core\resource"  
-TRAINLOC ""  
-EMAILSYS VIM  
-EMAILID ""  
.  
.  
-nodmsexp
```

## Placing a Copy of SAS Icon on the Desktop



## SAS Version 8 Desktop Icon Shortcut Target



SAS Version 8 Desktop Icon Shortcut Target...

“C:\Program Files\...\SAS.EXE”

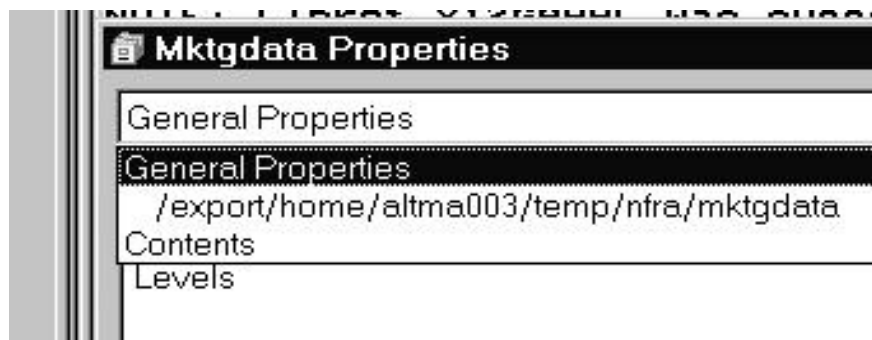
-AUTOEXEC

“C:\WINNT\...\AUTOEXEC.SAS”

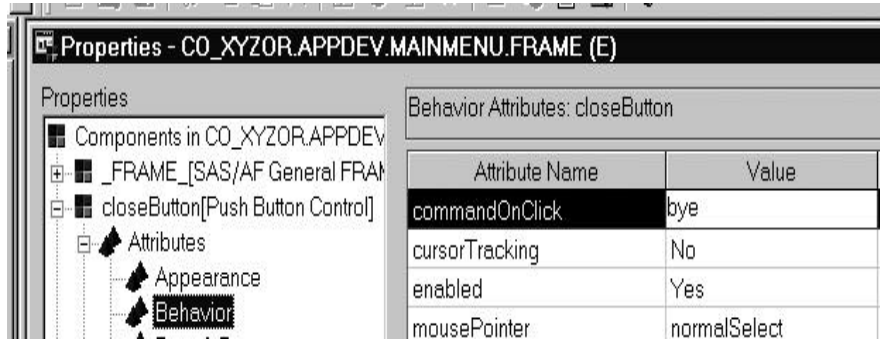
-CONFIG

“C:\Program Files\...\SASV8.CFG”

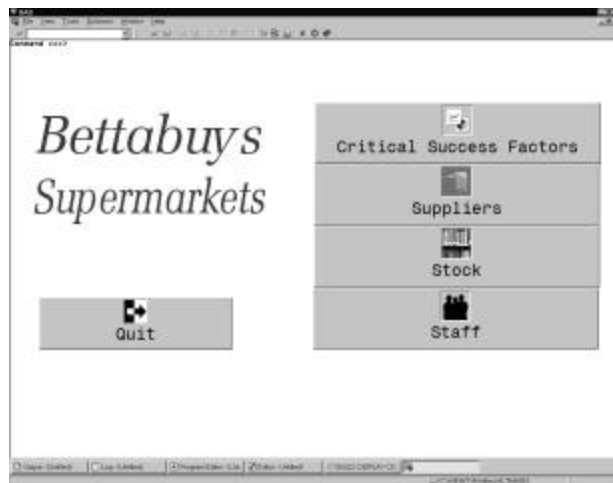
## Verifying Data Access



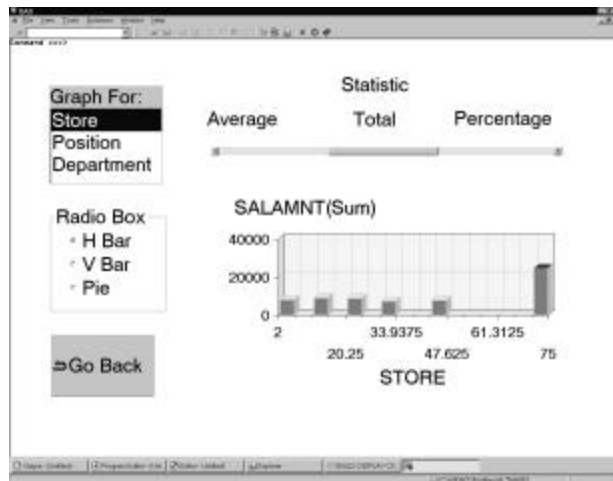
## Changing Attribute 'commandOnClick to Immediately Leave SAS



## “Bettabuy’s Supermarkets” Main Menu - Version 8



## “Bettabuys Supermarkets” Staff Frame



## “Bettabuys Supermarkets” Stock Type: Household - Warehouse Location

STOCK TYPES

- Audio Visual
- Food
- Gardening
- Household**
- Personal

- List of items
- Stock
- Warehouse location
- Edit items

Go Back

CODE	DESCRIPTION	STORAGE
H6981	1litre MEASURING JUG	FD1
H5980	LARGE PACK JACKSONS WASHING POW	G14
H7602	10 PACK BLACK REFUSE SACKS	G12
H8523	INDIVIDUAL GLASS MUG	FD4

```
libname c v6 'c:\sas';
libname d
      'c:\My Documents\...\V8';
proc copy in=c out=d
      memtype=catalog;
      select bettab1;
run;
proc copy in=c out=d
      memtype=data;
      select staff stock;
run;
```

## Summary

- I. “Company XYZ” Application...
  - A. Data set platform transfer another platform?
  - B. Access with SAS/CONNECT
  - C. Autoexec, configuration files
  - D. SAS icon shortcut
  - E. “Exit” pushbutton
  
- II. “Bettabuys Supermarkets”  
Example...  
Transfer catalogs, data sets with PROC COPY.

## About the Speaker

Lawrence Altmayer

U.S. Census Bureau

Phone: (301)457-2581

Email:

[Lawrence.W.Altmayer@census.gov](mailto:Lawrence.W.Altmayer@census.gov)